



Most of the roofs in the world including over 90% of the roofs in the United States are dark-colored. To help reduce the heat island affect created by the dark densely place urban roofs which, contributes to global warming, Tile Tech has developed the **Cool-Roof™** series pavers. Solar reflective **Cool-Roof™** Pavers are ideal for creating functional and attractive rooftop, terraces, balconies and plazas.



#### **Superior Color Stability**

Produced from premium, ultra white, raw materials that is uniformly distributed throughout the thickness of the pavers insures lifetime color stability.



**Heat & Light Reflecting** A cool roof is one that reflects the sun's heat and emits absorbed radiation back into the atmosphere. The roof literally stays cooler and reduces the amount of heat transferred to the building below, keeping the building a cooler and more energy efficient.



#### **Superior High Strength**

Produced under extreme hydraulic pressure by bonding crushed granite & quartz in a cement matrix duplicating the forces of nature.

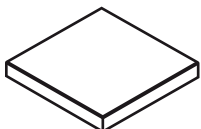
Our **Cool-Roof™** pavers utilize a high reflective value and low emissivity rate resulting in a high Solar Reflectance Index (SRI) value; Tile Tech **Cool-Roof™** pavers have a minimum SRI value of 78. This high SRI value allows you to meet the needs for "LEED" certified projects when used on your roof and balconies and can also be installed on pedestals for a complete roofing system.



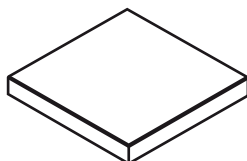
#### **Superior Surface Finish**

Surface is ground to expose the natural beauty of the quartz chips and can be honed and shot blasted resulting in a granite-like, slip resistant paver.

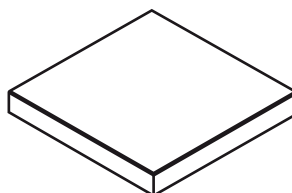
#### Standard Sizes



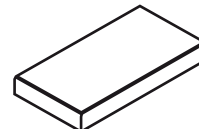
12 x 12



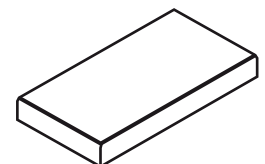
16 x 16



20 x 20

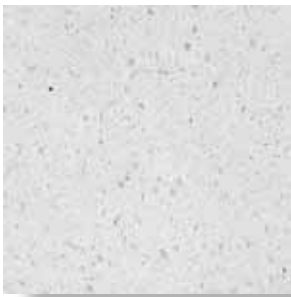


12 x 24

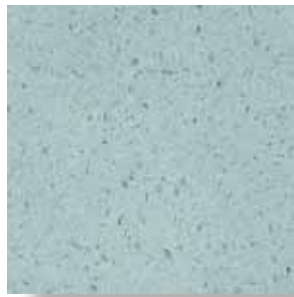


16 x 24

**Please Note:** Colors & finishes shown are only a representation. Please request samples for approval.



Cool-White



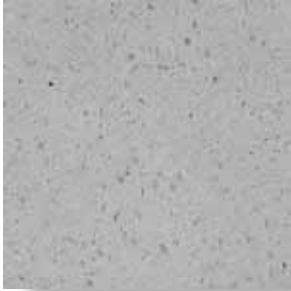
Cool-Blue



Cool-Green



Cool-Yellow



Cool-Gray



Cool-Red



Cool-Orange



**Cool-Roof™** paver can become an integral part of achieving LEED value credits under LEED NC Version 2.1 Credit 7.2. Full one credit value under Heat Island Effect Roof for compliance with ASTM E 408 in conjunction with this LEEDS version can be

achieved by specifically utilizing the Penny Lane or Cool-White colors with a value of .9 or greater. Our Cool-Roof™ pavers can be used for plaza or roof applications requiring LEED certification in either pedestal configurations or loose-laid applications.



*Energy efficiency at your feet...*

PAVER SPECS	Size L x W (inch)	Thickness (inch)	Weight per SqFt (Lb)	Weight per Unit (Lb)	Unit per Pallet (pcs)	Colors				
						Granite-Tech	Stamp-Tech	Oceanic Ser.	Cool-Roof	
 12 x 12	11.875" x 11.875" 300mm x 300mm	1"	•	11lb	11lb	250	•	•	•	•
		1-1/2" 2"	• •	21lb	21lb	126	•	•	•	•
 12 x 24	11.875" x 23.622" 300mm x 600mm	1"	•	16lb	32lb	95	•	•	•	•
		1-1/2" 2"	• •	20lb	40lb					
 16 x 16	15.75" x 15.75" 400mm x 400mm	1"	•	15lb	30lb	108	•	•	•	•
		1-1/4" 1-1/2" 2"	• • •							
 16 x 24	15.75" x 23.622" 400mm x 600mm	1"	•	16lb	42lb		•	•	•	•
		1-1/4" 1-1/2" 2"	• • •	21lb	55lb					
 20 x 20	19.68" x 19.68" 500mm x 500mm	1"	•	21lb	58lb	48	•	•	•	•
		1-1/2" 2"	• •							
 Coping	48" x 14" 1200mm x 400mm *Full Rounded Bullnose	1" 1-1/2" 2"	• • •	18lb	70lb	12	•	•	•	•

PAVER PROPERTIES	TEST METHOD	RESULTS
Compressive Strength	ASTM C-140	8,000psi Min
Flexural Strength	ASTM C-293	700psi Min
Water Absorption	ASTM C-936	5% Max
Coefficient of Friction	ASTM C-1028	0.6% Min
Freeze Thaw	ASTM C-67	1% Max
Dimensional Tolerance	+/- 1/16" Length, width, height, convex, concave.	

### MAINTENANCE

Pavers will require some periodic maintenance to keep them in a reasonable condition. Dirt, dust and leaves should be regularly removed and any weed growth should be sprayed and controlled.

### CLEANING

All pavers will require cleaning from time to time. Oil, rust, efflorescence and other stains can detract from the appearance of the paver. Specialized cleaning products for concrete pavers are readily available.

### SEALING

If a more protective surface is required or the pavers will knowingly be subject to salt attack then we suggest sealing your paving. Tile Tech recommends sealing pavers not for structural reasons but for aesthetic and maintenance purposes.

For complete material & installation specifications, please visit our website or contact us.